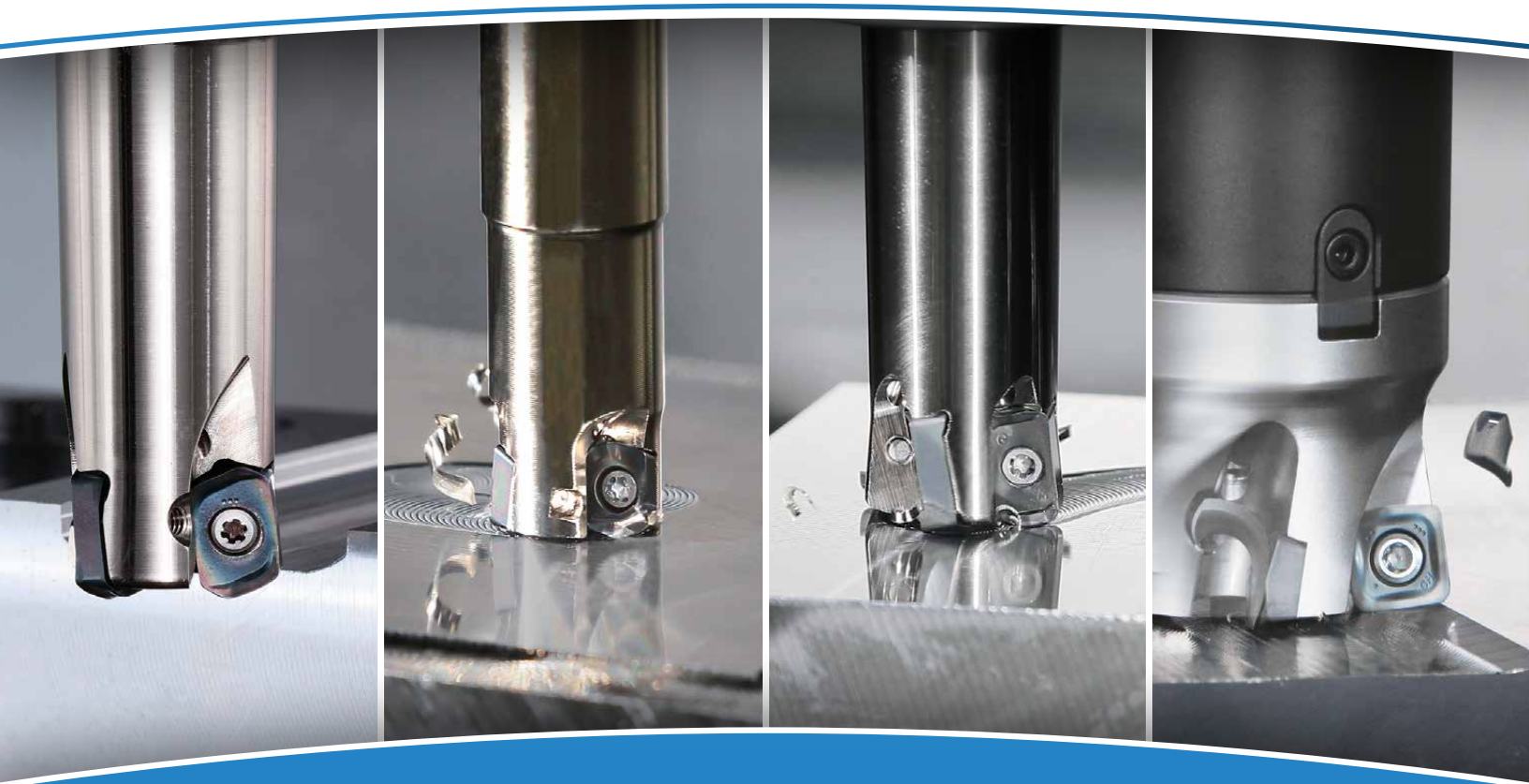




2021-2022 | FALL - WINTER

HIGH-FEED PROMO PACK



Special Offers on the MFH Series of High-Feed Milling Cutters

Complete MFH Series Product Information at
www.kyoceraprecisiontools.com/MFH



VALID THROUGH
March 31, 2022

KYOCERA PRECISION TOOLS (KPT)

KYOCERA Precision Tools (KPT) is a division of the Kyocera-SGS Precision Tools Group specializing in the manufacturing, servicing, and marketing of Indexable Cutting Tools. With over 40 years of cutting tool expertise, KYOCERA has become the market-leader in Japan and has an established global presence with manufacturing, technical centers and sales offices in the Americas, Europe, and Asia.



KYOCERA Precision Tools

CUTTING-EDGE, COST-EFFICIENT SOLUTIONS

KYOCERA Precision Tools develops state-of-the-art indexable cutting tools that exceed quality expectations while providing the cost-efficiency that today's metalworking consumer demands. Though ceramic technologies were the nucleus of the original business model, Kyocera has become a global leader in the metal removal industry by developing state-of-the-art cutting tool solutions using carbide, cermet, CBN and PCD. Over the past 40 years, Kyocera has developed some of the highest-quality, innovative indexable tooling solutions the industry has seen, including the **MEC Ultra-Hurricane 90° Milling Cutters**, the **MFH-Raptor High-Feed Milling Cutters**, the **DRZ & DRV Family of Magic Drills**, and **CCX**, the first-ever CVD Coated Cermet.



PRODUCTS



Turning & Boring



Holemaking



Indexable Milling



Small Tools for Swiss Lathes



Quick-Change Tooling & Specialty Tools



Grooving & Cut-Off

MARKETS SERVED



Aerospace



Automotive



Medical & Dental



Power Generation



Oil & Gas

MFH-MAX NEW

Small Diameter / Large Depth of Cut
Cutting Diameters: Ø1.000" ~ Ø3.000"

**Cost-Efficient Milling Kits Featuring
(1) Cutter and (10) Inserts**

Page 4



MFH-RAPTOR *Mini*

Small Diameter/Fine Pitch Type
Cutting Diameters: Ø0.625" ~ Ø2.000"

**Cost-Efficient Milling Kits Featuring
(1) Cutter and (10) Inserts**

Page 8



MFH-RAPTOR

Large Diameter
Cutting Diameters: Ø1.000" ~ Ø6.000"

**Cost-Efficient Milling Kits Featuring
(1) Cutter and (10) Inserts**

Page 10



MFH-RAPTOR *Micro*

Micro Diameter
Cutting Diameters: Ø0.375" ~ Ø0.625"

**Cost-Efficient Milling Kits Featuring
(1) Cutter and (10) Inserts**

Page 14



Locate a Distributor

Use our *Locate a Distributor* map at:
www.KyoceraPrecisionTools.com/locate

KYOCERA Precision Tools

P: 800.823.7284 • F: 828.692.1344 • E: ctsales@kyocerapti.com
Official Website: www.kyoceraprecisiontools.com • Distributor Website: mykpti.kyocera.com



MFH-MAX NEW

High Feed Milling with a Larger Depth of Cut

Newest Addition to the MFH High Feed Milling Family with Larger D.O.C. Capabilities
 Excellent Performance in Various Applications, including Automotive Parts, Difficult-to-cut Materials, and Mold Machining

MFH-MAX

MFH-MINI

MFH-RAPTOR

MFH-MICRO



4-edge, Double-sided Insert

Max. Depth of Cut
0.098"



Large lineup of end mills, face mills, and modular types available

MEGACOAT NANO
PR1525

First Choice for Carbon Steel and Alloy Steel

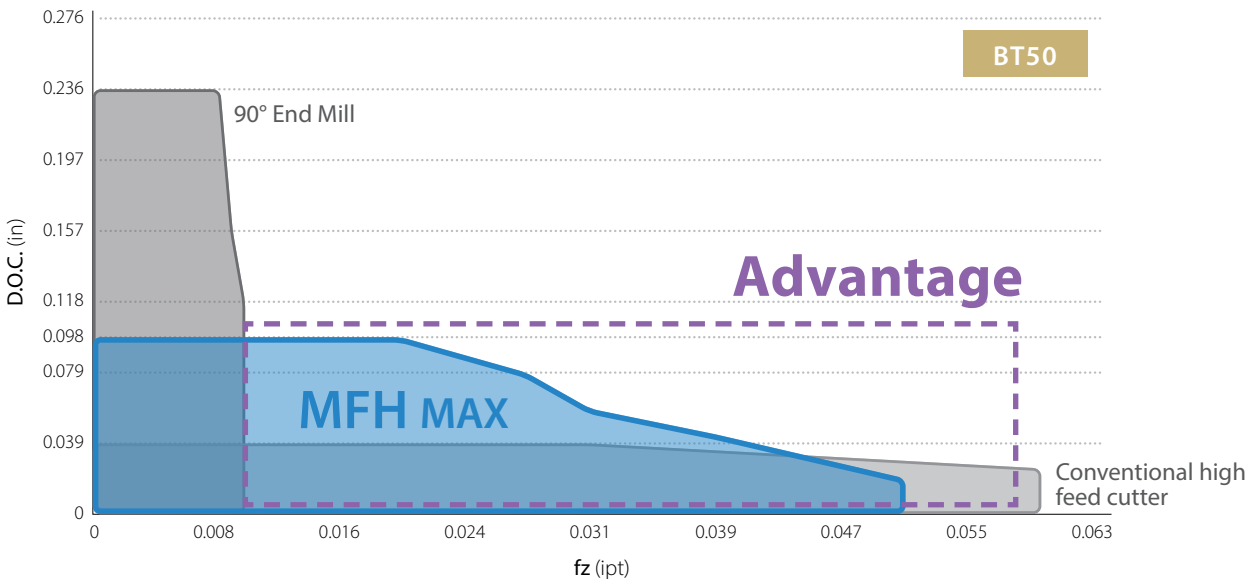
MEGACOAT NANO
PR1535

First Choice for Titanium and Austenitic Stainless Steel

CVD Coated Carbide
CA6535

First Choice For Heat-Resistant Alloys and Martensitic Stainless Steel

The MFH MAX Advantage



Vc = 490 sfm, ae = 0.492" (ae/DCX = 50%), 1049 Dry Ø1.000" Overhang length 2.362" BT50

2021-2022 Fall / Winter Offers Valid through March 31, 2022

All promotional items are available exclusively through Authorized North American Kyocera Precision Tool Distributors.

Please use specified Promo Code or Kit Part Number when placing orders. To locate a distributor visit www.kyoceraprecisiontools.com/locate.

Higher Efficiency at 0.098" Max. Depth of Cut

1 Better Alternative to Conventional 90° End Mills (Roughing to Medium-Finishing)



Automotive Suspension Parts

Automotive Parts

General Steel Machining

- Increased productivity with large D.O.C. machining
- High reliability in unstable machining environments
Long overhang length and better clamping rigidity
- Stable machining with low rigidity machines
- High-efficiency ramping
Large ramping angle (Small dia. Ø25mm: 3°)
- Dramatic efficiency improvement when ramping in pockets
- Longer tool life

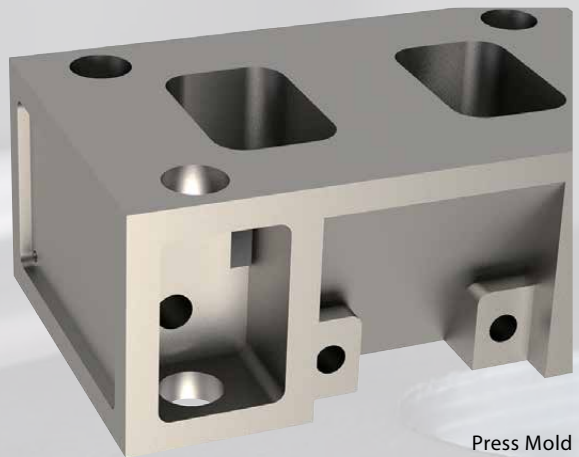
2 More Capabilities than Conventional High Feed Cutters

General Parts/Molds (Roughing/Facing)

General Parts, Pressing and Die Casting

- Higher productivity with larger D.O.C.
- Long tool life and improved efficiency through the reduction of tool paths
Reduced machining time when machining workpieces with large variations in machining margins
- Longer tool life with high-efficiency machining

*MFH-Mini/RAPTOR recommended for contouring with small depth of cut and high feed



Press Mold

3 Excellent Solution for Machining Difficult-to-cut Materials



Aircraft Landing Gear Parts

Aircraft/Energy Industry Parts

Difficult-to-cut materials such as titanium alloy and stainless steel machining

- High feed rates increase productivity
- Long tool life through the reduction of tool paths
- Heat-resistant grade PR1535 provides long tool life and stable machining

Improve Productivity and Reduce Machining Costs

MFH-MAX End Mill Kits

Includes (1) Cutter and (10) Inserts

Choose your Cutter and Insert Grade



MFH-MAX

MFH-MINI

MFH-RAPTOR

MFH-MICRO

| | Pick 1 Cutter Part Number | Cutting Dia. | No. of Insert Pockets | Insert Part Number See Page 7 | Pick 1 Insert Grade | Kit Part Number (Use when Ordering) | \$USD Kit Price |
|---|------------------------------|-----------------|-----------------------------|-------------------------------------|------------------------|--|--------------------|
| End Mills Standard Shank (Weldon) | MFH 1000-W100-04-3T | 1.000" | 3 | LOMU 040410ER-GM | PR1525 | MFH 1000-S100-04-3T Kit1 | \$300.00 |
| | | | | | PR1535 | MFH 1000-S100-04-3T Kit2 | |
| | | | | | CA6535 | MFH 1000-S100-04-3T Kit3 | |
| | MFH 1250-W125-04-5T | 1.250" | 5 | LOMU 040410ER-GM | PR1525 | MFH 1250-S125-04-5T Kit1 | \$350.00 |
| | | | | | PR1535 | MFH 1250-S125-04-5T Kit2 | |
| | | | | | CA6535 | MFH 1250-S125-04-5T Kit3 | |
| End Mills Standard Shank (Cylindrical) | MFH 1000-S100-04-3T | 1.000" | 3 | LOMU 040410ER-GM | PR1525 | MFH 1000-S100-04-3T Kit1 | \$270.00 |
| | | | | | PR1535 | MFH 1000-S100-04-3T Kit2 | |
| | | | | | CA6535 | MFH 1000-S100-04-3T Kit3 | |
| | MFH 1250-S125-04-5T | 1.250" | 5 | LOMU 040410ER-GM | PR1525 | MFH 1250-S125-04-5T Kit1 | \$320.00 |
| | | | | | PR1535 | MFH 1250-S125-04-5T Kit2 | |
| | | | | | CA6535 | MFH 1250-S125-04-5T Kit3 | |
| End Mills Long Shank (Cylindrical) | MFH 1000-S100-04-3T-7 | 1.000" | 3 | LOMU 040410ER-GM | PR1525 | MFH 1000-S100-04-3T-7 Kit1 | \$310.00 |
| | | | | | PR1535 | MFH 1000-S100-04-3T-7 Kit2 | |
| | | | | | CA6535 | MFH 1000-S100-04-3T-7 Kit3 | |
| | MFH 1250-S125-04-4T-8 | 1.250" | 4 | LOMU 040410ER-GM | PR1525 | MFH 1250-S125-04-4T-8 Kit1 | \$350.00 |
| | | | | | PR1535 | MFH 1250-S125-04-4T-8 Kit2 | |
| | | | | | CA6535 | MFH 1250-S125-04-4T-8 Kit3 | |
| End Mills Modular | MFH 1000-M12-04-3T | 1.000" | 3 | LOMU 040410ER-GM | PR1525 | MFH 1000-M12-04-3T Kit1 | \$270.00 |
| | | | | | PR1535 | MFH 1000-M12-04-3T Kit2 | |
| | | | | | CA6535 | MFH 1000-M12-04-3T Kit3 | |
| | MFH 1250-M16-04-5T | 1.250" | 5 | LOMU 040410ER-GM | PR1525 | MFH 1250-M16-04-5T Kit1 | \$320.00 |
| | | | | | PR1535 | MFH 1250-M16-04-5T Kit2 | |
| | | | | | CA6535 | MFH 1250-M16-04-5T Kit3 | |

2021-2022 Fall / Winter Offers Valid through March 31, 2022

All promotional items are available exclusively through Authorized North American Kyocera Precision Tool Distributors.

Please use specified Promo Code or Kit Part Number when placing orders. To locate a distributor visit www.kyoceraprecisiontools.com/locate.

MFH-MAX Face Mill Kits


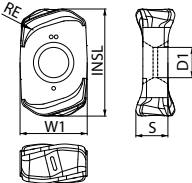
Includes (1) Cutter and (10) Inserts

Choose your Cutter and Insert Grade



| | Pick 1 Cutter Part Number | Cutting Dia. | No. of Insert Pockets | Insert Part Number | Pick 1 Insert Grade | Kit Part Number (Use when Ordering) | \$USD Kit Price |
|------------|------------------------------|-----------------|-----------------------------|-----------------------|------------------------|--|--------------------|
| | | | | | | | |
| Face Mills | MFH 1500R-04-6T | 1.500" | 6 | LOMU 040410ER-GM | PR1525 | MFH 1500R-04-6T Kit1 | \$430.00 |
| | | | | | PR1535 | MFH 1500R-04-6T Kit2 | |
| | | | | | CA6535 | MFH 1500R-04-6T Kit3 | |
| | MFH 2000R-04-7T | 2.000" | 7 | LOMU 040410ER-GM | PR1525 | MFH 2000R-04-7T Kit1 | \$470.00 |
| | | | | | PR1535 | MFH 2000R-04-7T Kit2 | |
| | | | | | CA6535 | MFH 2000R-04-7T Kit3 | |
| | MFH 2500R-04-9T | 2.500" | 9 | LOMU 040410ER-GM | PR1525 | MFH 2500R-04-9T Kit1 | \$520.00 |
| | | | | | PR1535 | MFH 2500R-04-9T Kit2 | |
| | | | | | CA6535 | MFH 2500R-04-9T Kit3 | |
| | MFH 3000R-04-10T | 3.000" | 10 | LOMU 040410ER-GM | PR1525 | MFH 3000R-04-10T Kit1 | \$560.00 |
| | | | | | PR1535 | MFH 3000R-04-10T Kit2 | |
| | | | | | CA6535 | MFH 3000R-04-10T Kit3 | |

MFH-MAX Inserts

| Usage Classification | P | Carbon Steel / Alloy Steel | | ★ | ★ | ★ | | | | |
|--|---|--------------------------------|-------|-------|-------|-------|---------------|--------|-------------|---|
| | | Mold Steel | | | | | | | | |
| ★ Roughing / 1st Choice ☆ Roughing / 2nd Choice (When hardness is under 45HRC) | M | Austenitic Stainless Steel | | ★ | ☆ | ★ | | | | |
| | | Martensitic Stainless Steel | | ☆ | | ★ | | | | |
| | S | Heat Resistant Alloy (Ni-base) | | ☆ | | ★ | | | | |
| | | Titanium Alloy (Ti-6Al-4V) | | ★ | | | | | | |
| Insert | Part Number | Dimensions (in) | | | | | MEGACOAT NANO | | CVD Coating | |
| | | W1 | S | D1 | INSL | RE | PR1535 | PR1525 | CA6535 | |
|  General Purpose |  | LOMU 040410ER-GM | 0.358 | 0.173 | 0.161 | 0.571 | 0.039 | ● | ● | ● |



MFH-RAPTOR Mini

Small Diameter High Feed End Mills & Face Mills

Expanded Lineup

New MFH-Mini face mills now available in 1.500" and 2.000" diameters

Higher Productivity

Double-sided 4-edge inserts will save money and increase productivity

Advanced Coating Technology

MEGACOAT NANO Coating technology increases tool life when machining difficult-to-cut materials



MFH-Mini Face Mill Kits

Includes (1) Cutter and (10) Inserts

Choose your Cutter and Insert Grade



| | Pick 1 | Cutting Dia. | No. of Insert Pockets | Insert Part Number | Pick 1 | Kit Part Number (Use when Ordering) | \$USD Kit Price |
|------------|--------------------|--------------|-----------------------|--------------------|--------------|-------------------------------------|-----------------|
| | Cutter Part Number | | | | Insert Grade | | |
| Face Mills | MFH 1500R-03-5T | 1.500" | 5 | LOGU030310ER-GM | PR1525 | MFH 1500R-03-5T Kit 1 | \$380.00 |
| | | | | | PR1535 | MFH 1500R-03-5T Kit 2 | |
| | | | | | CA6535 | MFH 1500R-03-5T Kit 3 | |
| | MFH 1500R-03-6T | 1.500" | 6 | LOGU030310ER-GM | PR1525 | MFH 1500R-03-6T Kit 1 | \$390.00 |
| | | | | | PR1535 | MFH 1500R-03-6T Kit 2 | |
| | | | | | CA6535 | MFH 1500R-03-6T Kit 3 | |
| | MFH 2000R-03-8T | 2.000" | 8 | LOGU030310ER-GM | PR1525 | MFH 2000R-03-8T Kit 1 | \$540.00 |
| | | | | | PR1535 | MFH 2000R-03-8T Kit 2 | |
| | | | | | CA6535 | MFH 2000R-03-8T Kit 3 | |
| | MFH 2000R-03-9T | 2.000" | 8 | LOGU030310ER-GM | PR1525 | MFH 2000R-03-9T Kit 1 | \$550.00 |
| | | | | | PR1535 | MFH 2000R-03-9T Kit 2 | |
| | | | | | CA6535 | MFH 2000R-03-9T Kit 3 | |

MFH-RAPTOR Mini Inserts

| Usage Classification | P | Carbon Steel / Alloy Steel | | | | | ★ | ★ | | |
|--|----------------------|--------------------------------|-------|-------|-------|-------|---------------|--------|--------|-------------|
| | | Mold Steel | | | | | | | | |
| ★ Roughing / 1st Choice ☆ Roughing / 2nd Choice (When hardness is under 45HRC) | M | Austenitic Stainless Steel | | | | | ★ | ☆ | | |
| | | Martensitic Stainless Steel | | | | | ☆ | | ★ | |
| | S | Heat Resistant Alloy (Ni-base) | | | | | ☆ | | ★ | |
| | | Titanium Alloy (Ti-6Al-4V) | | | | | ★ | | | |
| Insert | Part Number | Dimensions (in) | | | | | MEGACOAT NANO | | | CVD Coating |
| | | W1 | S | D1 | INSL | RE | PR1535 | PR1525 | CA6535 | |
| General Purpose | LOGU 030310ER-GM | 0.244 | 0.156 | 0.136 | 0.469 | 0.039 | ● | ● | ● | |

2021-2022 Fall / Winter Offers Valid through March 31, 2022

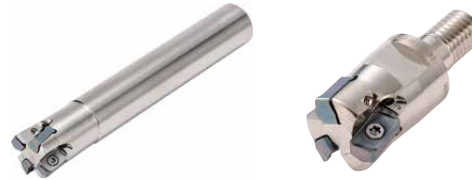
All promotional items are available exclusively through Authorized North American Kyocera Precision Tool Distributors.

Please use specified Promo Code or Kit Part Number when placing orders. To locate a distributor visit www.kyoceraprecisiontools.com/locate.

MFH-Mini End Mill Kits

Includes (1) Cutter and (10) Inserts

Choose your Cutter and Insert Grade



| | Pick 1 Cutter Part Number | Cutting Dia. | No. of Insert Pockets | Insert Part Number See Page 8 | Pick 1 Insert Grade | Kit Part Number (Use when Ordering) | \$USD Kit Price | |
|---|------------------------------|--------------------|-----------------------------|-------------------------------------|------------------------|--|--------------------------|----------|
| | | | | | | | | |
| End Mills Standard Shank (Weldon) | MFH 0625-W625-03-2T-3 | 0.625" | 2 | LOGU030310ER-GM | PR1525 | MFH 0625-W625-03-2T-3 Kit 1 | \$270.00 | |
| | | | | | PR1535 | MFH 0625-W625-03-2T-3 Kit 2 | | |
| | | | | | CA6535 | MFH 0625-W625-03-2T-3 Kit 3 | | |
| | MFH 0750-W750-03-3T-4 | 0.750" | 3 | LOGU030310ER-GM | PR1525 | MFH 0750-W750-03-3T-4 Kit 1 | \$310.00 | |
| | | | | | PR1535 | MFH 0750-W750-03-3T-4 Kit 2 | | |
| | | | | | CA6535 | MFH 0750-W750-03-3T-4 Kit 3 | | |
| | MFH 1000-W100-03-4T47 | 1.000" | 4 | LOGU030310ER-GM | PR1525 | MFH 1000-W100-03-4T47 Kit 1 | \$320.00 | |
| | | | | | PR1535 | MFH 1000-W100-03-4T47 Kit 2 | | |
| | | | | | CA6535 | MFH 1000-W100-03-4T47 Kit 3 | | |
| | MFH 1000-W100-03-5T47 | 1.000" | 5 | LOGU030310ER-GM | PR1525 | MFH 1000-W100-03-5T47 Kit 1 | \$340.00 | |
| | | | | | PR1535 | MFH 1000-W100-03-5T47 Kit 2 | | |
| | | | | | CA6535 | MFH 1000-W100-03-5T47 Kit 3 | | |
| | MFH 1250-W125-03-5T-5 | 1.250" | 5 | LOGU030310ER-GM | PR1525 | MFH 1250-W125-03-5T-5 Kit 1 | \$360.00 | |
| | | | | | PR1535 | MFH 1250-W125-03-5T-5 Kit 2 | | |
| | | | | | CA6535 | MFH 1250-W125-03-5T-5 Kit 3 | | |
| | MFH 1250-W125-03-6T-5 | 1.250" | 6 | LOGU030310ER-GM | PR1525 | MFH 1250-W125-03-6T-5 Kit 1 | \$380.00 | |
| | | | | | PR1535 | MFH 1250-W125-03-6T-5 Kit 2 | | |
| | | | | | CA6535 | MFH 1250-W125-03-6T-5 Kit 3 | | |
| End Mills Standard Shank (Cylindrical) | MFH 0625-S625-03-2T-6 | 0.625" | 2 | LOGU030310ER-GM | PR1525 | MFH 0625-S625-03-2T-6 Kit 1 | \$280.00 | |
| | | | | | PR1535 | MFH 0625-S625-03-2T-6 Kit 2 | | |
| | | | | | CA6535 | MFH 0625-S625-03-2T-6 Kit 3 | | |
| | MFH 0750-S750-03-3T65 | 0.750" | 3 | LOGU030310ER-GM | PR1525 | MFH 0750-S750-03-3T65 Kit 1 | \$310.00 | |
| | | | | | PR1535 | MFH 0750-S750-03-3T65 Kit 2 | | |
| | | | | | CA6535 | MFH 0750-S750-03-3T65 Kit 3 | | |
| | MFH 0875-S750-03-3T55 | 0.875" | 3 | LOGU030310ER-GM | PR1525 | MFH 0875-S750-03-3T55 Kit 1 | \$320.00 | |
| | | | | | PR1535 | MFH 0875-S750-03-3T55 Kit 2 | | |
| | | | | | CA6535 | MFH 0875-S750-03-3T55 Kit 3 | | |
| | MFH 1000-S100-03-4T-7 | 1.000" | 4 | LOGU030310ER-GM | PR1525 | MFH 1000-S100-03-4T-7 Kit 1 | \$320.00 | |
| | | | | | PR1535 | MFH 1000-S100-03-4T-7 Kit 2 | | |
| | | | | | CA6535 | MFH 1000-S100-03-4T-7 Kit 3 | | |
| | MFH 1250-S125-03-5T-8 | 1.250" | 5 | LOGU030310ER-GM | PR1525 | MFH 1250-S125-03-5T-8 Kit 1 | \$360.00 | |
| | | | | | PR1535 | MFH 1250-S125-03-5T-8 Kit 2 | | |
| | | | | | CA6535 | MFH 1250-S125-03-5T-8 Kit 3 | | |
| | End Mills Modular | MFH 0625-M08-03-2T | 0.625" | 2 | LOGU030310ER-GM | PR1525 | MFH 0625-M08-03-2T Kit 1 | \$390.00 |
| | | | | | | PR1535 | MFH 0625-M08-03-2T Kit 2 | |
| | | | | | | CA6535 | MFH 0625-M08-03-2T Kit 3 | |
| MFH 0750-M10-03-3T | | 0.750" | 3 | LOGU030310ER-GM | PR1525 | MFH 0750-M10-03-3T Kit 1 | \$240.00 | |
| | | | | | PR1535 | MFH 0750-M10-03-3T Kit 2 | | |
| | | | | | CA6535 | MFH 0750-M10-03-3T Kit 3 | | |
| MFH 1000-M12-03-4T | | 1.000" | 4 | LOGU030310ER-GM | PR1525 | MFH 1000-M12-03-4T Kit1 | \$280.00 | |
| | | | | | PR1535 | MFH 1000-M12-03-4T Kit2 | | |
| | | | | | CA6535 | MFH 1000-M12-03-4T Kit3 | | |
| MFH 1250-M16-03-5T | | 1.250" | 5 | LOGU030310ER-GM | PR1525 | MFH 1250-M16-03-5T Kit1 | \$330.00 | |
| | | | | | PR1535 | MFH 1250-M16-03-5T Kit2 | | |
| | | | | | CA6535 | MFH 1250-M16-03-5T Kit3 | | |
| MFH 1250-M16-03-6T | | 1.250" | 6 | LOGU030310ER-GM | PR1525 | MFH 1250-M16-03-6T Kit1 | \$330.00 | |
| | | | | | PR1535 | MFH 1250-M16-03-6T Kit2 | | |
| | | | | | CA6535 | MFH 1250-M16-03-6T Kit3 | | |
| MFH 1500-M16-03-6T | | 1.500" | 6 | LOGU030310ER-GM | PR1525 | MFH 1500-M16-03-6T Kit1 | \$350.00 | |
| | | | | | PR1535 | MFH 1500-M16-03-6T Kit2 | | |
| | | | | | CA6535 | MFH 1500-M16-03-6T Kit3 | | |

MFH-MAX
MFH-MINI
MFH-RAPTOR
MFH-MICRO



MFH-RAPTOR

Anti-Vibration Design for High Feed Milling Applications

High Feed with Less Vibration

Offering a variety of options with 3 different insert designs

Higher Productivity

Available for ramping and helical milling

Advanced Coating Technology

MEGACOAT NANO Coating technology increases tool life when machining difficult-to-cut materials



MEGACOAT NANO
PR1525

First Choice for Carbon Steel and Alloy Steel

MEGACOAT NANO
PR1535

First Choice for Titanium and Austenitic Stainless Steel

CVD Coated Carbide
CA6535

First Choice For Heat-Resistant Alloys and Martensitic Stainless Steel



MFH-RAPTOR End Mill Kits

Includes (1) Cutter and (10) Inserts

Choose your Cutter and Insert Grade

| | Pick 1 | Cutting Dia. | No. of Insert Pockets | Insert Part Number See Page 13 | Pick 1 | Kit Part Number (Use when Ordering) | USD Kit Price |
|---|---------------------|--------------|-----------------------|-----------------------------------|--------------|--|---------------|
| | Cutter Part Number | | | | Insert Grade | | |
| End Mills Standard Shank (Weldon) | MFH 1000-W100-10-2T | 1.000" | 2 | SOMT100420ER-GM | PR1525 | MFH 1000-W100-10-2T Kit 1 | \$260.00 |
| | | | | | PR1535 | MFH 1000-W100-10-2T Kit 2 | |
| | | | | | CA6535 | MFH 1000-W100-10-2T Kit 3 | |
| | MFH 1250-W125-10-3T | 1.250" | 3 | SOMT100420ER-GM | PR1525 | MFH 1250-W125-10-3T Kit 1 | \$270.00 |
| | | | | | PR1535 | MFH 1250-W125-10-3T Kit 2 | |
| | | | | | CA6535 | MFH 1250-W125-10-3T Kit 3 | |
| | MFH 1500-W150-10-3T | 1.500" | 3 | SOMT100420ER-GM | PR1525 | MFH 1500-W150-10-3T Kit 1 | \$310.00 |
| | | | | | PR1535 | MFH 1500-W150-10-3T Kit 2 | |
| | | | | | CA6535 | MFH 1500-W150-10-3T Kit 3 | |
| | MFH 1500-W150-10-4T | 1.500" | 4 | SOMT100420ER-GM | PR1525 | MFH 1500-W150-10-4T Kit 1 | \$380.00 |
| | | | | | PR1535 | MFH 1500-W150-10-4T Kit 2 | |
| | | | | | CA6535 | MFH 1500-W150-10-4T Kit 3 | |

2021-2022 Fall / Winter Offers Valid through March 31, 2022

All promotional items are available exclusively through Authorized North American Kyocera Precision Tool Distributors.

Please use specified Promo Code or Kit Part Number when placing orders. To locate a distributor visit www.kyoceraprecisiontools.com/locate.

MFH-MAX

MFH-MINI

MFH-RAPTOR

MFH-MICRO



MFH-RAPTOR End Mill Kits (Continued)

Includes (1) Cutter and (10) Inserts
Choose your Cutter and Insert Grade

| | Pick 1 Cutter Part Number | Cutting Dia. | No. of Insert Pockets | Insert Part Number See Page 13 | Pick 1 Insert Grade | Kit Part Number (Use when Ordering) | \$USD Kit Price |
|--|-------------------------------------|-----------------|-----------------------------|---|-------------------------------|--|--------------------|
| End Mills Long Shank (Cylindrical) | MFH 1000-S100-10-2T-8 | 1.000" | 2 | SOMT100420ER-GM | PR1525 | MFH 1000-S100-10-2T-8 Kit 1 | \$260.00 |
| | | | | | PR1535 | MFH 1000-S100-10-2T-8 Kit 2 | |
| | | | | | CA6535 | MFH 1000-S100-10-2T-8 Kit 3 | |
| | MFH 1250-S125-10-2T-8 | 1.250" | 2 | SOMT100420ER-GM | PR1525 | MFH 1250-S125-10-2T-8 Kit 1 | \$320.00 |
| | | | | | PR1535 | MFH 1250-S125-10-2T-8 Kit 2 | |
| | | | | | CA6535 | MFH 1250-S125-10-2T-8 Kit 3 | |
| | MFH 1500-S125-10-4T-10 | 1.500" | 4 | SOMT100420ER-GM | PR1525 | MFH 1500-S125-10-4T-10 Kit 1 | \$430.00 |
| | | | | | PR1535 | MFH 1500-S125-10-4T-10 Kit 2 | |
| | | | | | CA6535 | MFH 1500-S125-10-4T-10 Kit 3 | |

MFH-MAX

MFH-MINI

MFH-RAPTOR

MFH-MICRO



MFH-RAPTOR Face Mill Kits

Includes (1) Cutter and (10) Inserts

Choose your Cutter and Insert Grade

| | Pick 1 Cutter Part Number | Cutting Dia. | No. of Insert Pockets | Insert Part Number See Page 13 | Pick 1 Insert Grade | Kit Part Number (Use when Ordering) | \$USD Kit Price |
|------------------------------|-------------------------------------|--------------|-----------------------|-----------------------------------|-------------------------------|--|--------------------|
| Face Mills with 10mm Inserts | 2000R-10-4T | 2.000" | 4 | SOMT100420ER-GM | PR1525 | MFH 2000R-10-4T Kit 1 | \$420.00 |
| | | | | | PR1535 | MFH 2000R-10-4T Kit 2 | |
| | | | | | CA6535 | MFH 2000R-10-4T Kit 3 | |
| | 2000R-10-5T | 2.000" | 5 | SOMT100420ER-GM | PR1525 | MFH 2000R-10-5T Kit 1 | \$420.00 |
| | | | | | PR1535 | MFH 2000R-10-5T Kit 2 | |
| | | | | | CA6535 | MFH 2000R-10-5T Kit 3 | |
| | 2500R-10-5T | 2.500" | 5 | SOMT100420ER-GM | PR1525 | MFH 2500R-10-5T Kit 1 | \$440.00 |
| | | | | | PR1535 | MFH 2500R-10-5T Kit 2 | |
| | | | | | CA6535 | MFH 2500R-10-5T Kit 3 | |
| | 2500R-10-6T | 2.500" | 6 | SOMT100420ER-GM | PR1525 | MFH 2500R-10-6T Kit 1 | \$440.00 |
| | | | | | PR1535 | MFH 2500R-10-6T Kit 2 | |
| | | | | | CA6535 | MFH 2500R-10-6T Kit 3 | |
| 3000R-10-7T | 3.000" | 7 | SOMT100420ER-GM | PR1525 | MFH 3000R-10-7T Kit 1 | \$450.00 | |
| | | | | PR1535 | MFH 3000R-10-7T Kit 2 | | |
| | | | | CA6535 | MFH 3000R-10-7T Kit 3 | | |
| Face Mills with 14mm Inserts | 2000R-14-4T | 2.000" | 4 | SOMT140520ER-GM | PR1525 | MFH 2000R-14-4T Kit 1 | \$420.00 |
| | | | | | PR1535 | MFH 2000R-14-4T Kit 2 | |
| | | | | | CA6535 | MFH 2000R-14-4T Kit 3 | |
| | 2000R-14-5T | 2.000" | 5 | SOMT140520ER-GM | PR1525 | MFH 2000R-14-5T Kit 1 | \$420.00 |
| | | | | | PR1535 | MFH 2000R-14-5T Kit 2 | |
| | | | | | CA6535 | MFH 2000R-14-5T Kit 3 | |
| | 2500R-14-4T | 2.500" | 5 | SOMT140520ER-GM | PR1525 | MFH 2500R-14-4T Kit 1 | \$420.00 |
| | | | | | PR1535 | MFH 2500R-14-4T Kit 2 | |
| | | | | | CA6535 | MFH 2500R-14-4T Kit 3 | |
| | 2500R-14-5T | 2.500" | 5 | SOMT140520ER-GM | PR1525 | MFH 2500R-14-5T Kit 1 | \$420.00 |
| | | | | | PR1535 | MFH 2500R-14-5T Kit 2 | |
| | | | | | CA6535 | MFH 2500R-14-5T Kit 3 | |
| | 2500R-14-5T-1000 | 2.500" | 5 | SOMT140520ER-GM | PR1525 | MFH 2500R-14-5T-1000 Kit 1 | \$420.00 |
| | | | | | PR1535 | MFH 2500R-14-5T-1000 Kit 2 | |
| | | | | | CA6535 | MFH 2500R-14-5T-1000 Kit 3 | |
| | 3000R-14-5T | 3.000" | 6 | SOMT140520ER-GM | PR1525 | MFH 3000R-14-5T Kit 1 | \$440.00 |
| | | | | | PR1535 | MFH 3000R-14-5T Kit 2 | |
| | | | | | CA6535 | MFH 3000R-14-5T Kit 3 | |
| | 3000R-14-6T | 3.000" | 6 | SOMT140520ER-GM | PR1525 | MFH 3000R-14-6T Kit 1 | \$440.00 |
| | | | | | PR1535 | MFH 3000R-14-6T Kit 2 | |
| | | | | | CA6535 | MFH 3000R-14-6T Kit 3 | |
| | 3000R-14-6T-1250 | 3.000" | 6 | SOMT140520ER-GM | PR1525 | MFH 3000R-14-6T-1250 Kit 1 | \$440.00 |
| | | | | | PR1535 | MFH 3000R-14-6T-1250 Kit 2 | |
| | | | | | CA6535 | MFH 3000R-14-6T-1250 Kit 3 | |

2021-2022 Fall / Winter Offers Valid through March 31, 2022

All promotional items are available exclusively through Authorized North American Kyocera Precision Tool Distributors.

Please use specified Promo Code or Kit Part Number when placing orders. To locate a distributor visit www.kyoceraprecisiontools.com/locate.

MFH-MAX

MFH-MINI

MFH-RAPTOR

MFH-MICRO


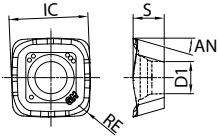


MFH-RAPTOR Face Mill Kits

Includes (1) Cutter and (10) Inserts
Choose your Cutter and Insert Grade

| | Pick 1 Cutter Part Number | Cutting Dia. | No. of Insert Pockets | Insert Part Number See Page 13 | Pick 1 Insert Grade | Kit Part Number (Use when Ordering) | \$USD Kit Price |
|------------------------------|------------------------------|--------------|-----------------------|-----------------------------------|------------------------|--|-----------------|
| | | | | | | | |
| Face Mills with 14mm Inserts | MFH 4000R-14-6T | 4.000" | 6 | SOMT140520ER-GM | PR1525 | MFH 4000R-14-6T Kit 1 | \$520.00 |
| | | | | | PR1535 | MFH 4000R-14-6T Kit 2 | |
| | | | | | CA6535 | MFH 4000R-14-6T Kit 3 | |
| | MFH 4000R-14-7T | 5.000" | 7 | SOMT140520ER-GM | PR1525 | MFH 4000R-14-7T Kit 1 | \$520.00 |
| | | | | | PR1535 | MFH 4000R-14-7T Kit 2 | |
| | | | | | CA6535 | MFH 4000R-14-7T Kit 3 | |
| | MFH 5000R-14-7T | 5.000" | 7 | SOMT140520ER-GM | PR1525 | MFH 5000R-14-7T Kit 1 | \$640.00 |
| | | | | | PR1535 | MFH 5000R-14-7T Kit 2 | |
| | | | | | CA6535 | MFH 5000R-14-7T Kit 3 | |
| | MFH 6000R-14-8T | 6.000" | 8 | SOMT140520ER-GM | PR1525 | MFH 6000R-14-8T Kit 1 | \$920.00 |
| | | | | | PR1535 | MFH 6000R-14-8T Kit 2 | |
| | | | | | CA6535 | MFH 6000R-14-8T Kit 3 | |

MFH-Raptor Inserts

| Usage Classification | P | Carbon Steel / Alloy Steel | | ★ | ★ | | | | |
|--|------------------|--------------------------------|-------|-------|-------|-------------|---------------|--------|-----------------------|
| | | Mold Steel | | | | ★ | ★ | | |
| ★ Roughing / 1st Choice ☆ Roughing / 2nd Choice (When hardness is under 45HRC) | M | Austenitic Stainless Steel | | ★ | ☆ | | | | |
| | | Martensitic Stainless Steel | | ☆ | ★ | | | | |
| | S | Heat Resistant Alloy (Ni-base) | | ☆ | ★ | | | | |
| | | Titanium Alloy (Ti-6Al-4V) | | ★ | | | | | |
| Insert | Part Number | Dimensions (in) | | | | Angle AN | MEGACOAT NANO | | CVD Coating CA6535 |
| | | IC | S | D1 | RE | | PR1535 | PR1525 | |
|   General Purpose | SOMT 100420ER-GM | 0.406 | 0.180 | 0.181 | 0.079 | 16° | ● | ● | ● |
| | SOMT 140520ER-GM | 0.557 | 0.219 | 0.228 | 0.079 | 16° | ● | ● | ● |



MFH-RAPTOR MICRO

Smallest Diameter in High Feed Milling Series

Durable Design Aids in Chatter Resistance

Maximum D.O.C. 0.020" with stable high feed machining in a wide range of applications

Replaces Solid End Mills to Reduce Machining Costs

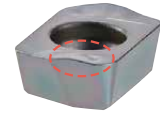
Suppresses chattering and increases milling efficiency

Advanced Coating Technology

MEGACOAT NANO Coating technology increases tool life when machining difficult-to-cut materials



Molded Convex Cutting Edge

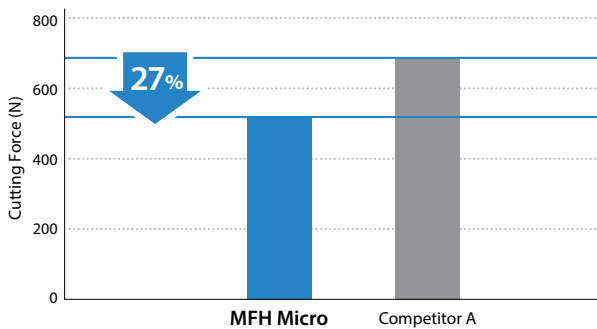


High Precision G Class Insert

1 Stable Machining with Chattering Resistance

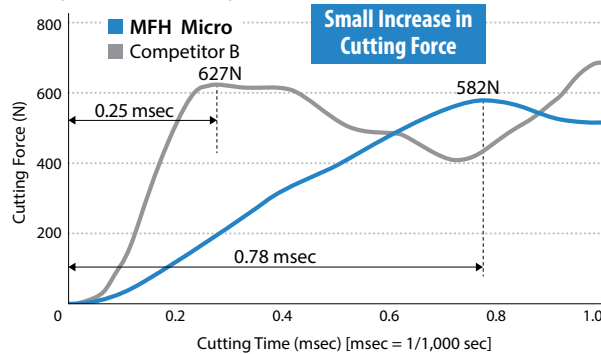
Molded Convex Cutting Edge Controls Initial Impact when Entering the Workpiece

Cutting Force Comparison (In-house Evaluation)



Cutting Conditions: $V_c = 390$ sfm, $f_z = 0.024$ ipt, D.O.C. = 0.016"
Cutter Dia. $\emptyset 0.375$ ", Slotting, Dry Workpiece: 1049

Increase in Cutting Force when Entering Work Piece (In-house Evaluation)



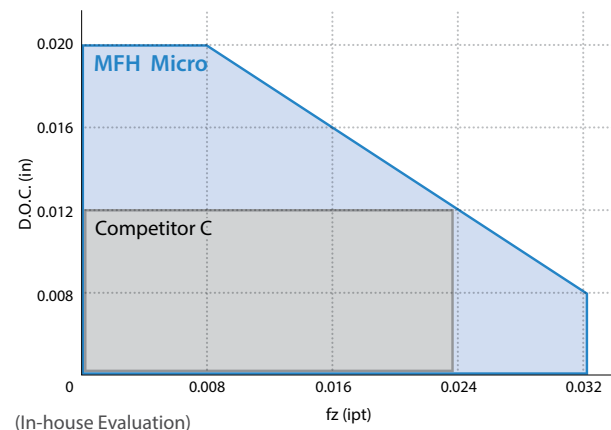
Cutting Conditions: $V_c = 390$ sfm, $f_z = 0.024$ ipt, D.O.C. $\times a_e = 0.016" \times 0.197"$
Cutter Dia. $\emptyset 0.375$ ", Dry Workpiece: 1049

2 Wide Range of Machining Applications

Wide Range of Machining Applications at a Maximum Depth of Cut of 0.020"

Stable Machining Even with Small Machining Centers

Cutting Performance Map (Cutter Dia. $\emptyset 0.375$ ")



(In-house Evaluation)

2021-2022 Fall / Winter Offers Valid through March 31, 2022

All promotional items are available exclusively through Authorized North American Kyocera Precision Tool Distributors.

Please use specified Promo Code or Kit Part Number when placing orders. To locate a distributor visit www.kyoceraprecisiontools.com/locate.

MFH-MAX

MFH-MINI

MFH-RAPTOR

MFH-MICRO

MEGACOAT NANO
PR1525

First Choice for Carbon Steel and Alloy Steel

MEGACOAT NANO
PR1535

First Choice for Titanium and Austenitic Stainless Steel

CVD Coated Carbide
CA6535

First Choice For Heat-Resistant Alloys and Martensitic Stainless Steel

MFH-Micro End Mill Kits

Includes (1) Cutter and (10) Inserts
Choose your Cutter and Insert Grade




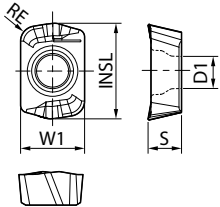
Cylindrical Shank End Mills



Modular End Mill

| | Pick 1 Cutter Part Number | Cutting Dia. | No. of Insert Pockets | Insert Part Number See Below | Pick 1 Insert Grade | Kit Part Number (Use when Ordering) | \$USD Kit Price |
|---------------------------------|------------------------------|--------------|-----------------------|---------------------------------|------------------------|--|--------------------|
| | | | | | | | |
| Standard Shank (Cylindrical) | 0375-S375-01-1T-3 | 0.375" | 1 | LPGT010210ER-GM | PR1525 | MFH 0375-S375-01-1T-3 Kit 1 | \$250.00 |
| | | | | | PR1535 | MFH 0375-S375-01-1T-3 Kit 2 | |
| | | | | | CA6535 | MFH 0375-S375-01-1T-3 Kit 3 | |
| | 0394-S375-01-2T-3 | 0.394" | 2 | LPGT010210ER-GM | PR1525 | MFH 0394-S375-01-2T-3 Kit 1 | \$250.00 |
| | | | | | PR1535 | MFH 0394-S375-01-2T-3 Kit 2 | |
| | | | | | CA6535 | MFH 0394-S375-01-2T-3 Kit 3 | |
| | 0500-S500-01-3T-5 | 0.500" | 3 | LPGT010210ER-GM | PR1525 | MFH 0500-S500-01-3T-5 Kit 1 | \$280.00 |
| | | | | | PR1535 | MFH 0500-S500-01-3T-5 Kit 2 | |
| | | | | | CA6535 | MFH 0500-S500-01-3T-5 Kit 3 | |
| | 0625-S625-01-4T35 | 0.625" | 4 | LPGT010210ER-GM | PR1525 | MFH 0625-S625-01-4T35 Kit 1 | \$280.00 |
| | | | | | PR1535 | MFH 0625-S625-01-4T35 Kit 2 | |
| | | | | | CA6535 | MFH 0625-S625-01-4T35 Kit 3 | |
| Modular End Mill | 0500-M06-01-3T | 0.500" | 3 | LPGT010210ER-GM | PR1525 | MFH 0500-M06-01-3T Kit 1 | \$200.00 |
| | | | | | PR1535 | MFH 0500-M06-01-3T Kit 2 | |
| | | | | | CA6535 | MFH 0500-M06-01-3T Kit 3 | |
| | 0625-M08-01-4T | 0.625" | 4 | LPGT010210ER-GM | PR1525 | MFH 0625-M08-01-4T Kit 1 | \$240.00 |
| | | | | | PR1535 | MFH 0625-M08-01-4T Kit 2 | |
| | | | | | CA6535 | MFH 0625-M08-01-4T Kit 3 | |

MFH-RAPTOR Micro Inserts

| Usage Classification | P | Carbon Steel / Alloy Steel | | ★ | | | | | |
|--|-------------------------|--------------------------------|-------|-------|-------|-------|---------------|--------|-------------|
| | | Mold Steel | | ★ | | | | | |
| ★ Roughing / 1st Choice ☆ Roughing / 2nd Choice (When hardness is under 45HRC) | M | Austenitic Stainless Steel | | ★ | ☆ | | | | |
| | | Martensitic Stainless Steel | | ☆ | ★ | | | | |
| | S | Heat Resistant Alloy (Ni-base) | | ☆ | ★ | | | | |
| | | Titanium Alloy (Ti-6Al-4V) | | ★ | | | | | |
| Insert | Part Number | Dimensions (in) | | | | | MEGACOAT NANO | | CVD Coating |
| | | W1 | S | D1 | INSL | RE | PR1535 | PR1525 | CA6535 |
|  General Purpose  | LPGT 010210ER-GM | 0.165 | 0.086 | 0.083 | 0.247 | 0.039 | ● | ● | ● |

KYOCERA Precision Tools

MFH-MAX

MFH-MINI

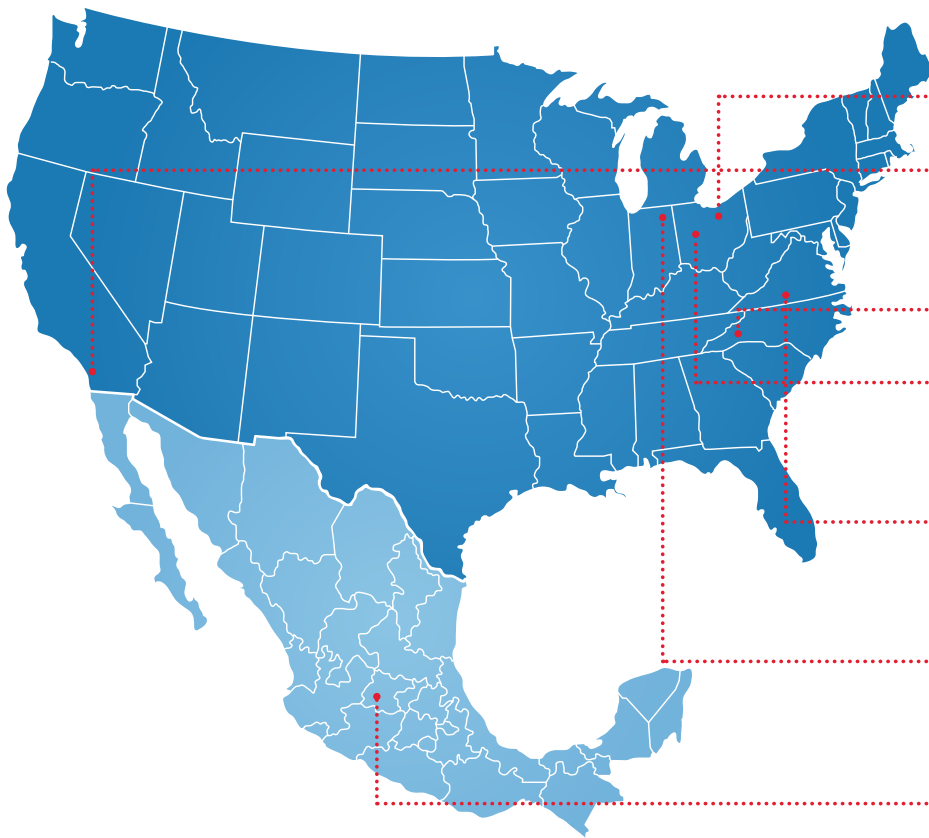
MFH-RAPTOR

MFH-MICRO



KYOCERA PRECISION TOOLS

KYOCERA Precision Tools, a division of the KYOCERA-SGS Precision Tools group, provides indexable tooling solutions and service to a variety of industries, including aerospace, automotive, medical, dental, oil & gas, and power generation.



KYOCERA-SGS Precision Tools (KSPT)

Cuyahoga Falls, OH
Global HQ/Solid Round Tool Production

Orange, CA
Solid Round Tool Production

KYOCERA Precision Tools (KPT)

Hendersonville, NC
Sales & Marketing/Customer Service

Wapakoneta, OH
Indexable Toolholder Production

KYOCERA-SGS Tech Hub (KSPT)

Danville, VA
R&D/Custom Tool Production

KYOCERA-SGS Medical Division

Columbia City, IN
Engineering/Production

KYOCERA Precision Tools Mexico

Silao, Guanajuato, Mexico
Sales/Customer Service



KYOCERA Precision Tools

102 Industrial Park Road
Hendersonville, NC 28792
Customer Service | 800.823.7284 - Option 1
Technical Support | 800.823.7284 - Option 2



Official Website | www.kyoceraprecisiontools.com
Distributor Website | mykpti.kyocera.com
Email | cuttingtools@kyocerapti.com